



Partner of Stora Enso

The Centre for Advanced Timber Technology

Hereford, United Kingdom



The Centre for Advanced Timber Technology (CATT) based at the New Model Institute for Technology and Engineering (NMITE), is designed to encourage active education on the latest timber technology. The building is a stand-out example of the latest in timber design, with biophilic principles at its heart.

The building is a hybrid structure built using a combination of timber and steel. The studio space is constructed with a combination of cross-laminated timber (CLT) panels for the external walls and roofs supplied by Stora Enso and erected by our partner, Hybrid Structures. There are also internal and external glued-laminated timber (GLT) beams and timber-insulated closed panels. Externally, the walls are clad with larch.

NMITE wanted to showcase as many different ways of using timber as possible within the building, which, combined with moisture sensors make the building a Living Lab.

Read the full case study here:

EN: <https://www.storaenso.com/en/newsroom/news/2023/2/the-centre-for-advanced-timber-technology>

DE: <https://www.storaenso.com/de-de/newsroom/news/2023/2/the-centre-for-advanced-timber-technology>

FR: <https://www.storaenso.com/fr-fr/newsroom/news/2023/2/the-centre-for-advanced-timber-technology>

SV: <https://www.storaenso.com/sv-se/newsroom/news/2023/2/the-centre-for-advanced-timber-technology>

Also available in German, Swedish and French.



General

Delivery year
2021

Building type
Education

Area (m²)
2500



Photo credit: Speller Metcalfe/Stora Enso



 **Products**

Products
CLT

Product volume (m³)
289

Product quality
Non Visible Quality (NVI)



Photo credit: Mila Duncheva, Stora Enso

 **Team**

Partner of Stora Enso
Hybrid Structures

Structural Engineer
Hybrid Structures
Shire

Main contractor
Speller Metcalfe

Architect
Bond Bryan

MEP Designer
Hydrock

Specialist Timber Contractor
Hybrid Structures

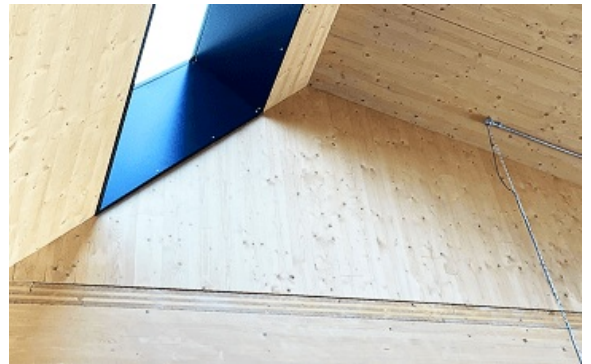


Photo credit: Mila Duncheva, Stora Enso



Photo credit: Mila Duncheva, Stora Enso

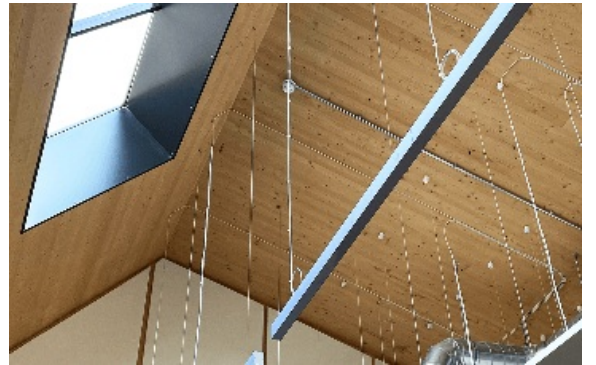


Photo credit: Mila Duncheva, Stora Enso